



Research Article

Integrative Human Physiology and Constitutional Homoeopathy: From Molecular Signaling, Cellular Communication, And Network Physiology to Systemic Regulation and Biological Homeostasis

Prof. Dr Alpana Kashyap ^{1*}, Dr. Abhishek Kashyap ²

¹ BHMS, MD Homoeopathy (Practice of Medicine), PHD Scholar, Mba (Hospital Management), D. Pharma. Principal And Medical Superintendent, Valan Homoeopathic Medical College and Hospital Valan, Karjan, Vadodara, Gujarat, India

² MBBS Internship College - Dr KNS Memorial Institute of Medical Sciences, Barabanki, Uttar Pradesh, India

Corresponding Author: * Dr. Abhishek Kashyap

DOI: <https://doi.org/10.5281/zenodo.21191971>

Abstract

Background: Contemporary biomedical sciences increasingly conceptualise human health as an emergent property arising from dynamic interactions among molecular signalling pathways, cellular communication systems, organ networks, and organism-wide regulatory mechanisms. Advances in molecular physiology, systems biology, network medicine, psychoneuroimmunology, and adaptive physiology have progressively shifted scientific understanding from reductionist organ-centred models toward integrated frameworks of biological regulation and complexity. Constitutional homoeopathy similarly interprets health and disease as manifestations of dynamic systemic balance, constitutional susceptibility, and adaptive responsiveness of the living organism.

Objective: The present review aims to critically examine the conceptual intersections between contemporary human physiology and constitutional homoeopathic philosophy, with particular emphasis on molecular signaling, cellular communication, network physiology, neuroendocrine regulation, biological homeostasis, and systemic adaptation.

Methods: A narrative integrative review methodology was employed through critical analysis of classical homoeopathic literature, standard human physiology and biochemistry textbooks, systems biology literature, and contemporary biomedical research concerning cellular signaling, neuroendocrine regulation, homeostasis, adaptive physiology, and psychoneuroimmunological mechanisms.

Results: The analysis revealed substantial conceptual convergence between constitutional homoeopathic principles and contemporary models of integrated physiological regulation. Areas of overlap were identified in neuroendocrine communication, immune modulation, stress adaptation, biological individuality, allostasis, systems-level integration, and dynamic regulatory networks governing health and disease.

Conclusion: Integrative physiology and constitutional homoeopathy share several conceptual themes related to adaptive regulation, systemic interconnectedness, biological individuality, and maintenance of physiological equilibrium. Further interdisciplinary investigations incorporating biomarker research, systems biology, and network physiology may contribute to a deeper understanding of complex mechanisms underlying health, disease, and therapeutic response.

KEYWORDS: Constitutional homoeopathy, systems biology, molecular signalling, network physiology, neuroendocrine regulation, homeostasis, human physiology, integrative medicine.

Manuscript Information

- ISSN No: 2583-7397
- Received: 15-05-2026
- Accepted: 28-06-2026
- Published: 04-07-2026
- IJCRM: 5(4); 2026: 41-47
- ©2026, All Rights Reserved
- Plagiarism Checked: Yes
- Peer Review Process: Yes

How to Cite this Article

Kashyap A, Kashyap A Integrative Human Physiology and Constitutional Homoeopathy: From Molecular Signaling, Cellular Communication, And Network Physiology to Systemic Regulation and Biological Homeostasis. Int J Contemp Res Multidiscip. 2026;5(4):41-47.

Access this Article Online



www.multiarticlesjournal.com

INTRODUCTION

The discipline of human physiology has evolved substantially from classical reductionist interpretations of isolated organ function toward integrative paradigms emphasizing multidirectional communication among molecular pathways, cellular networks, endocrine mediators, neural circuits, immune mechanisms, and environmental influences. Modern physiological science increasingly recognizes that biological function emerges from coordinated interactions among multiple interconnected systems rather than from independent organ activity alone.

Complex biological systems demonstrate several defining characteristics, including:

- Nonlinear and dynamic regulation
- Adaptive responsiveness to internal and external stimuli
- Maintenance of dynamic equilibrium
- Inter-organ communication networks
- Feedback and feedforward regulatory mechanisms
- Emergent physiological behaviour

These developments have contributed to the emergence of systems physiology and network medicine as important frameworks for understanding human health and disease.

Constitutional homeopathy similarly conceptualizes disease not merely as localized pathology but as an expression of disturbed systemic regulation involving the entire organism. The constitutional approach emphasizes biological individuality, susceptibility, adaptive capacity, and restoration of physiological harmony through individualized therapeutic intervention.

Molecular Signaling and Cellular Communication

Cellular communication forms the fundamental basis of physiological regulation and biological adaptation. Cells continuously exchange information through highly coordinated signaling pathways that regulate growth, metabolism, immunity, differentiation, tissue repair, and environmental responsiveness.

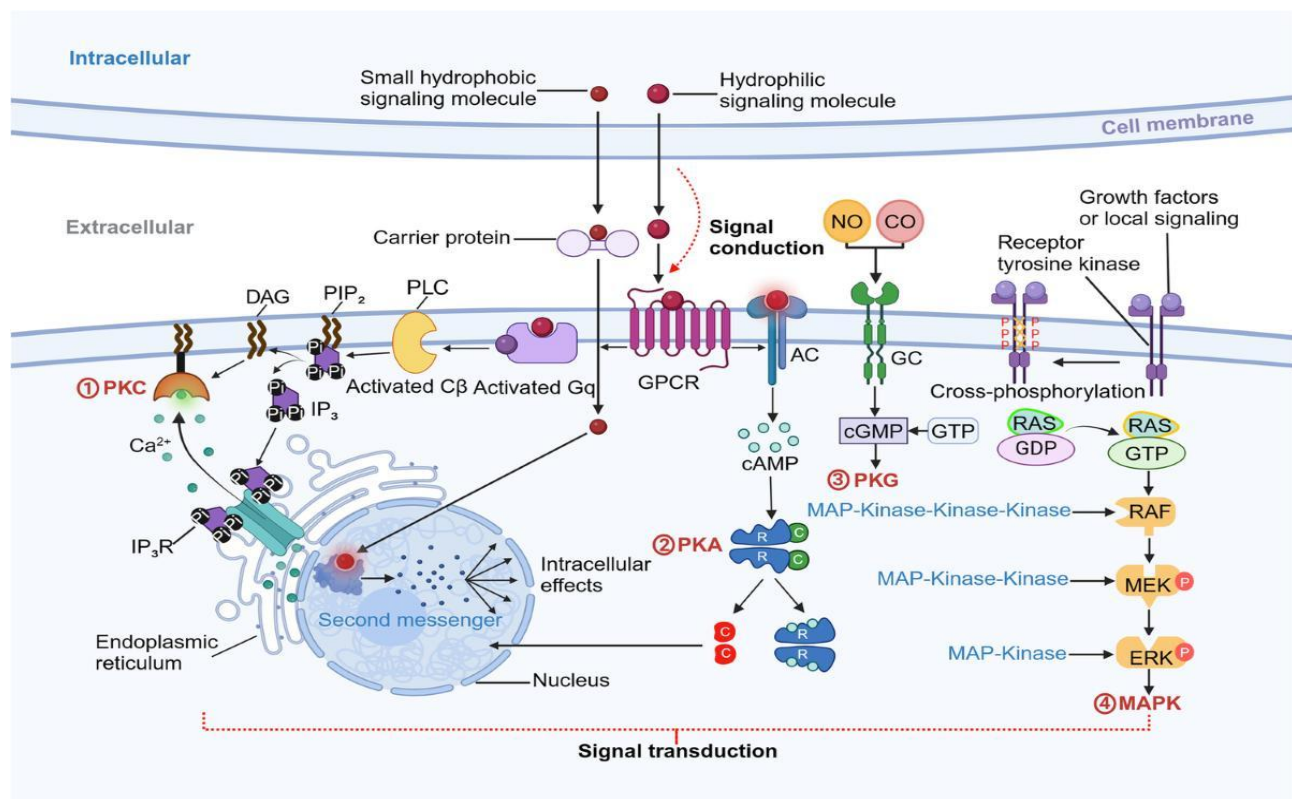
Major signalling modalities include:

- Endocrine signaling
- Paracrine signaling
- Autocrine signaling
- Synaptic neurotransmission
- Cytokine-mediated immune signaling
- Extracellular vesicle communication
- Intracellular second messenger pathways

These signaling mechanisms operate through receptor-mediated pathways involving cyclic nucleotides, protein kinases, calcium signalling, transcription factors, and gene regulatory networks.

Disturbances in cellular communication have been implicated in numerous pathological conditions, including chronic inflammatory disorders, autoimmune diseases, metabolic dysfunction, neurodegenerative disorders, and malignancies.

Constitutional homeopathy emphasizes individualized patterns of biological responsiveness and variations in susceptibility, concepts that increasingly resonate with contemporary understanding of molecular heterogeneity, phenotypic diversity, and personalized medicine.



Network Physiology and Biological Integration

Network physiology has emerged as a contemporary scientific discipline dedicated to understanding the dynamic interactions occurring among physiological systems operating across multiple temporal and spatial scales.

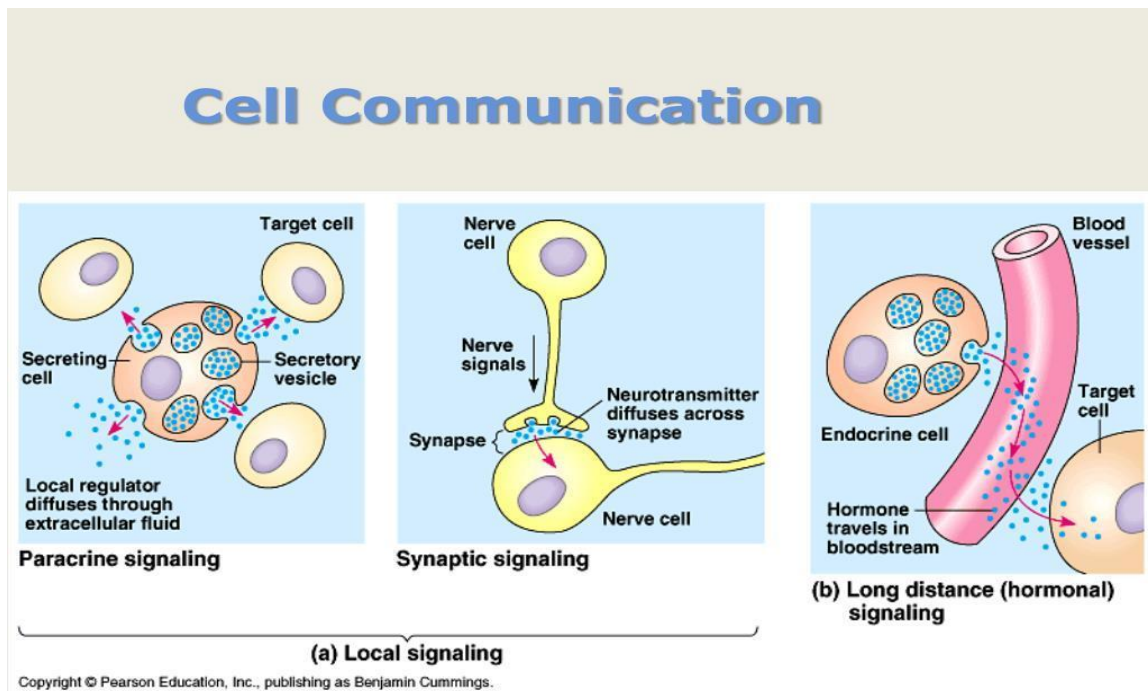
Major interconnected systems include:

- Central and autonomic nervous systems
- Endocrine regulatory networks
- Immune surveillance mechanisms
- Cardiovascular regulatory systems
- Gastrointestinal and microbiome interactions
- Metabolic pathways and energy regulation

Rather than functioning as isolated entities, these systems continuously exchange biochemical, electrical, hormonal, and immunological information to maintain physiological coherence and adaptive stability.

Disruption within a single regulatory node may propagate throughout multiple biological networks, contributing to multisystem dysfunction and complex disease phenotypes.

Constitutional homoeopathy similarly recognises that disturbances originating within one domain of physiological function may manifest through diverse and apparently unrelated symptom expressions across multiple organ systems, reflecting an integrated understanding of organismal regulation.



Neuroendocrine Regulation

The neuroendocrine system represents one of the principal mechanisms governing adaptation, stress responses, energy metabolism, immunity, and maintenance of physiological equilibrium.

Among these regulatory pathways, the hypothalamic–pituitary–adrenal (HPA) axis occupies a central role in coordinating responses to environmental and psychological stressors.

Major neuroendocrine mediators include:

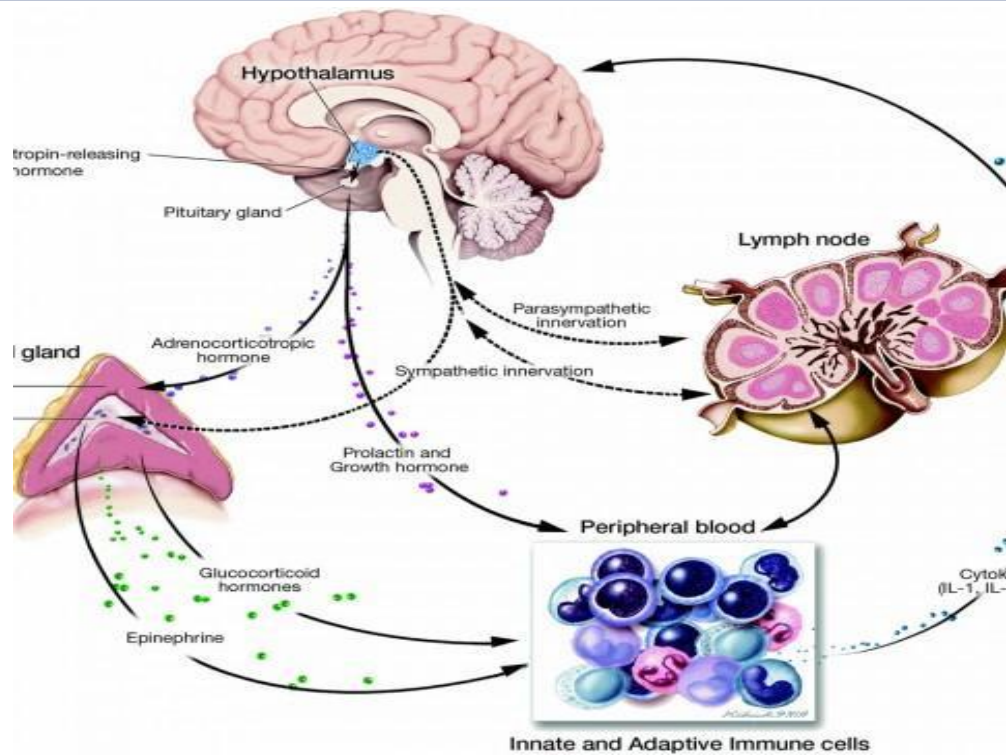
- Cortisol
- Catecholamines
- Pro-inflammatory and anti-inflammatory cytokines
- Neuropeptides
- Growth factors

- Neurotransmitters

These mediators interact through complex feedback mechanisms that regulate immune function, metabolic activity, cardiovascular responses, emotional processing, and behavioral adaptation.

Persistent dysregulation of neuroendocrine pathways has been associated with chronic inflammatory diseases, metabolic syndrome, psychiatric disorders, autoimmune conditions, and psychosomatic illnesses.

The constitutional approach in homoeopathy similarly places considerable emphasis on the dynamic interactions between emotional, physical, and environmental factors influencing health and disease expression.



Psychoneuroimmunology and Constitutional Susceptibility

Psychoneuroimmunology represents an interdisciplinary scientific field investigating bidirectional interactions among neural, endocrine, and immune systems.

Major areas of interaction include:

- Emotional and psychological states
- Neuroendocrine regulation
- Neural signalling pathways
- Immune responsiveness
- Inflammatory mediators
- Stress adaptation mechanisms

Accumulating evidence demonstrates that emotional stress, psychological trauma, and chronic psychosocial adversity exert profound influences upon immune competence, inflammatory regulation, and disease susceptibility.

Constitutional homeopathy has historically emphasized the significance of individual susceptibility, psychosomatic integration, emotional constitution, and adaptive capacity in determining disease expression and therapeutic response.

These principles demonstrate remarkable conceptual similarity to contemporary psychoneuroimmunological models describing the interconnectedness of mind, brain, endocrine regulation, and immune function.

Biological Homeostasis and Allostasis

Homeostasis refers to the maintenance of internal physiological stability despite fluctuations in the external and internal environment. Classical physiological models describe homeostasis as a dynamic process involving coordinated feedback mechanisms that preserve optimal conditions for cellular function.

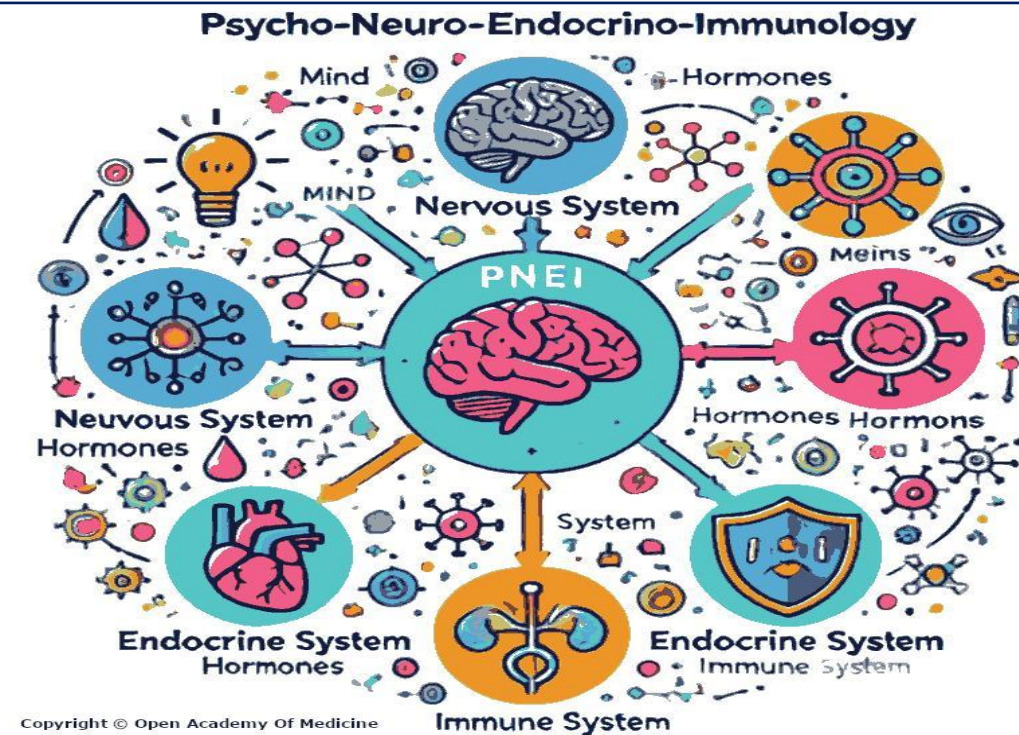
The concept of allostasis further extends this framework by emphasizing the adaptive adjustments undertaken by biological systems in response to stress, environmental change, and physiological demand.

Major mechanisms involved in homeostatic and allostatic regulation include:

- Hormonal feedback loops
- Neural regulatory pathways
- Immune surveillance mechanisms
- Metabolic adaptation processes
- Cardiovascular adjustments
- Behavioral responses

Failure of these adaptive mechanisms may result in allostatic overload, contributing to chronic inflammation, metabolic disorders, cardiovascular disease, and neuropsychiatric dysfunction.

Constitutional homeopathy similarly emphasizes restoration of physiological equilibrium and adaptive resilience as central therapeutic objectives.



Systems Biology and Personalized Medicine

Systems biology represents a holistic scientific approach aimed at understanding biological function through integration of molecular, cellular, and organismal data across multiple levels of complexity.

Key domains within systems biology include:

- Genomics
- Proteomics
- Metabolomics
- Transcriptomics
- Epigenomics
- Computational network modeling

These technologies facilitate understanding of biological systems as dynamic and interconnected networks rather than isolated biochemical pathways.

The emergence of precision medicine and personalized therapeutics increasingly recognizes the importance of individual biological variability, genetic predisposition, environmental influences, and differential therapeutic responsiveness.

Interestingly, constitutional homeopathy has historically emphasized individualized treatment based upon constitutional characteristics, susceptibility patterns, and unique symptom expressions long before the advent of contemporary personalized medicine frameworks.

This convergence provides an important opportunity for future interdisciplinary dialogue between systems biology, integrative physiology, and constitutional therapeutic approaches.

DISCUSSION

The present review highlights notable conceptual parallels between contemporary human physiology and constitutional homeopathic philosophy. Modern biomedical sciences increasingly recognize health as an emergent property arising from complex interactions among molecular signaling pathways, cellular communication networks, neuroendocrine regulation, immune responses, and adaptive physiological mechanisms.

Constitutional homeopathy similarly emphasizes systemic integration, biological individuality, susceptibility, and dynamic regulation of health and disease. Although the epistemological frameworks of conventional physiology and homeopathic philosophy differ substantially, several conceptual intersections are evident in areas such as homeostasis, allostasis, psychoneuroimmunology, network physiology, and systems biology.

The concepts of constitutional susceptibility and individualized therapeutic response in homeopathy demonstrate similarities with emerging approaches in precision medicine and personalized healthcare. Furthermore, recent advances in biomarker research, systems medicine, and integrative physiology provide opportunities for interdisciplinary dialogue and future translational investigations.

Limitations

The present article represents a narrative and conceptual review rather than an experimental investigation.

Several limitations should therefore be acknowledged:

- Direct experimental evidence correlating constitutional homeopathic concepts with molecular physiological mechanisms remains limited.

- Philosophical terminology used in classical homoeopathy may not directly correspond to contemporary biomedical terminology.
- Interpretations presented in this review are conceptual and exploratory in nature.
- Considerable heterogeneity exists among different schools of homoeopathic philosophy regarding interpretation of constitutional concepts.

Future Directions

Future interdisciplinary research may focus on:

- Neuroendocrine biomarker studies in constitutional homoeopathic practice.
- Investigation of cytokine profiles and inflammatory mediators.
- Heart rate variability and autonomic nervous system regulation.
- Systems biology approaches to constitutional susceptibility.
- Metabolomic and proteomic profiling in individualized homoeopathic treatment.
- Psychoneuroimmunological studies exploring mind–body interactions.

- Development of biomarker-based models for integrative medicine research.

Such investigations may contribute to improved scientific understanding of complex regulatory mechanisms in health and disease.

Author Contributions

Author 1

- Conceptualization and study design
- Organon and constitutional homoeopathy interpretation
- Physiological and biochemical integration
- Critical review of classical literature
- Manuscript writing and final approval

Author 2

- Literature retrieval and screening
- Data extraction and reference management
- Figure and table preparation
- APA formatting and manuscript editing
- Language review and proofreading

CRedit Taxonomy Format (Preferred by International Journals)

Contribution Category	Author 1	Author 2
Conceptualization	✓	
Methodology	✓	✓
Literature Review	✓	✓
Formal Analysis	✓	✓
Investigation	✓	
Writing – Original Draft	✓	
Writing – Review & Editing	✓	✓
Visualization		✓
Supervision	✓	
Project Administration	✓	
Final Approval of Manuscript	✓	✓

Funding

The authors received no financial support for the research, authorship, or publication of this article.

Conflict of Interest

The authors declare that there are no conflicts of interest related to this work.

Ethical Statement

Ethical approval was not required for the present study because it involved analysis, interpretation, and synthesis of previously published literature and did not involve human participants, animal experimentation, or identifiable personal data.

Data Availability Statement

No new datasets were generated or analyzed during the preparation of this review article. All information utilized in the manuscript was obtained from previously published literature and publicly available academic resources.

Acknowledgements

The authors express their sincere gratitude to the pioneers and scholars of classical homoeopathy whose philosophical contributions continue to inspire contemporary academic inquiry. The authors also acknowledge the contributions of researchers in human physiology, biochemistry, systems biology, and integrative medicine whose work has facilitated interdisciplinary understanding of biological regulation and health.

REFERENCES

1. Alberts B, Johnson A, Lewis J, Morgan D, Raff M, Roberts K, et al. *Molecular biology of the cell*. 6th ed. New York: Garland Science; 2014.
2. Allen HC. *Keynotes and characteristics with comparisons of some of the leading remedies of the materia medica*. 8th ed. New Delhi: B. Jain Publishers; 2002.
3. Bellavite P, Ortolani R, Conforti A. Immunology and homeopathy. 4. Clinical studies—Part 2. *Evid Based*

- Complement Alternat Med.* 2006;3(4):397-409. doi:10.1093/ecam/nel084.
4. Bellavite P, Signorini A. *The emerging science of homeopathy: Complexity, biodynamics, and nanopharmacology.* Berkeley (CA): North Atlantic Books; 2002.
 5. Boericke W. *Pocket manual of homoeopathic materia medica and repertory.* New Delhi: B. Jain Publishers; 1998.
 6. Boger CM. *Studies in the philosophy of healing.* New Delhi: B. Jain Publishers; 1999.
 7. Cannon WB. *The wisdom of the body.* New York: W. W. Norton & Company; 1932.
 8. Close S. *The genius of homoeopathy: Lectures and essays on homoeopathic philosophy.* New Delhi: B. Jain Publishers; 1997.
 9. Damasio AR. *The feeling of what happens: Body and emotion in the making of consciousness.* New York: Harcourt Brace; 1999.
 10. Ganong WF. *Ganong's review of medical physiology.* 26th ed. New York: McGraw-Hill Education; 2019.
 11. Goldstein DS. Stress, allostasis, and the implications for understanding physiological regulation. In: Goldstein DS, editor. *Stress, allostasis and homeostasis.* London: Academic Press; 2019. p. 1-18.
 12. Guyton AC, Hall JE. *Guyton and Hall textbook of medical physiology.* 14th ed. Philadelphia: Elsevier; 2021.
 13. Hahnemann S. *Organon of medicine.* 6th ed. Boericke W, translator. New Delhi: B. Jain Publishers; 1994.
 14. Halliwell B, Gutteridge JMC. *Free radicals in biology and medicine.* 5th ed. Oxford: Oxford University Press; 2015.
 15. Jonas WB, Jacobs J. *Healing with homeopathy: The complete guide.* New York: Warner Books; 1996.
 16. Kent JT. *Lectures on homoeopathic philosophy.* New Delhi: B. Jain Publishers; 1997.
 17. Lodish H, Berk A, Kaiser CA, Krieger M, Bretscher A, Ploegh H, et al. *Molecular cell biology.* 8th ed. New York: W. H. Freeman; 2016.
 18. McEwen BS. Physiology and neurobiology of stress and adaptation: Central role of the brain. *Physiol Rev.* 2007;87(3):873-904. doi:10.1152/physrev.00041.2006.
 19. Naidoo P, Campbell D. Integrative physiology and medical systems theory: Emerging perspectives in biomedical sciences. *J Integr Med.* 2019;17(2):85-92.
 20. Oschman JL. *Energy medicine: The scientific basis.* 2nd ed. Philadelphia: Elsevier; 2015.
 21. Pert CB. *Molecules of emotion: Why you feel the way you feel.* New York: Scribner; 1997.
 22. Selye H. *The stress of life.* Rev ed. New York: McGraw-Hill; 1976.
 23. Singh M. Dynamic concepts in homoeopathic philosophy and constitutional medicine. *Indian J Res Homoeopathy.* 2016;10(2):72-79.
 24. Vithoulikas G. *The science of homeopathy.* New York: Grove Press; 1980.
 25. Walter FB. Homeostasis and physiological regulation in complex biological systems. *J Biol Syst.* 2001;9(2):101-109.
 26. Watkins A, Reilly D. Integrative concepts in complementary medicine and systems regulation. *Complement Ther Med.* 2001;9(4):210-216.
 27. Winnick S. Constitutional medicine and physiological individuality in integrative healthcare. *Homeopathy.* 2008;97(1):35-41.
 28. Wright S. *Applied physiology.* 13th ed. Oxford: Oxford University Press; 2012.
 29. Yates FE. Order and complexity in dynamical systems: Applications to biological regulation. *Math Biosci.* 1994;121(2):369-381.
 30. Farrington EA. *Clinical materia medica.* New Delhi: B. Jain Publishers; 1995.
 31. Boenninghausen CMF von. *The lesser writings of C. M. F. von Boenninghausen.* New Delhi: B. Jain Publishers; 2005.
 32. Nanduri V. Susceptibility and constitutional response in homoeopathic philosophy. *Homeopathy.* 2010;99(4):236-242.
 33. Goldstein DS, McEwen BS. Allostasis, homeostasis, and the nature of stress responses. *Stress.* 2002;5(1):55-58. doi:10.1080/102538902900012345.

Creative Commons (CC) License

This article is an open-access article distributed under the terms and conditions of the Creative Commons Attribution–Non-Commercial–No Derivatives 4.0 International (CC BY-NC-ND 4.0) license. This license permits sharing and redistribution of the article in any medium or format for non-commercial purposes only, provided that appropriate credit is given to the original author(s) and source. No modifications, adaptations, or derivative works are permitted under this license.

About the Author



Prof. Dr. Alpana Kashyap is a distinguished homoeopathic physician, academician, and researcher serving as Principal and Medical Superintendent at Valan Homoeopathic Medical College and Hospital, Gujarat. She holds BHMS, MD (Homoeopathy–Practice of Medicine), MBA (Hospital Management), D. Pharma, and is pursuing a Ph.D. Her interests include medical education, homoeopathic practice, hospital administration, and clinical research.



Dr. Abhishek Kashyap is an MBBS intern at Dr. KNS Memorial Institute of Medical Sciences, Barabanki, Uttar Pradesh, India. He is dedicated to developing clinical expertise and evidence-based medical practice. His academic interests include patient care, internal medicine, preventive healthcare, and medical research, with a commitment to delivering quality healthcare services.